



BOAT LIFTS www.highanddry.co.za Ph 0827267387



OWNERS MANUAL

*HIGH & DRY BOATLIFTS (Pty) Ltd
5 Osmond str
Strand, Western Cape
South Africa
Ph +27 (0)82 7267387*

INDEX

- 1.** Introduction

- 2.** Operating Instructions
 - 2.1 Raising your boat
 - 2.2 Launching your boat

- 3.** Do's and don'ts

- 4.** Mooring Locations

- 5.** Maintenance

- 6.** Technical Specification

- 7.** Product Installation and use warning disclaimer

- 8.** Warranty Certificate

1. INTRODUCTION

Welcome to High & Dry Boatlifts dry storage solution.

High & Dry Boatlift is a patented, designed and engineered dry boat storage solution aimed at making dry boat storage affordable and user friendly so everyone can use it.

The protection and piece of mind it offers you are unrivalled in the industry. It's unique launching and lifting mechanism enables you to leave your float unattended for long periods of time.

High & Dry Boatlifts ensures:

- You have less marine growth on your boat, eliminating anti-fouling and thus better fuel consumption and speed.
- You can launch and retrieve your boats in seconds so no more spend time launching boats on trailers when you could be on the water.
- Galvanic corrosion is a thing of the past leading to longer engine life.
- Increased resale value of your boat.
- Reduced maintenance time and cost on your boat.

2. OPERATING INSTRUCTIONS

2.1 TO LAUNCH BOAT

1. Slack aft mooring lines.
2. Always blow the air through the system through the upper ports until bubbles appear under all compartments to ensure there are now blockages and that all pumps are supplying enough pressure.
3. Attach hose pipes to the "BOTTOM" attachments of Blower House (bottom four connectors)



4. Switch on all four blowers simultaneously for 5 to 10 seconds and then switch off the blowers.
5. The syphon is now syphoning water into the lift and the lift submerges under gravity. Do not leave the blowers on for the duration of the lowering cycle. **Note that the lift will sink very slowly without a boat on the lift.**
6. The lift will stop lowering automatically after which the boat can be driven onto the lift.

2.2 RAISING YOUR BOAT

1. Position boat over lift and attach guide ropes to rear cleats of the boat.



(For first time installation position the boat's center of gravity in the middle of the boat. Start the blowers. The float must lift horizontally. If the bow rises bow first, switch off blowers and let the lift sink back into the water. Move boat fwd and try again until the lift lifts horizontally. If the stern lifts first, move the boat back until the lift lifts your boat horizontally. This may take a few iterations.)

2. Attach the hose pipes to the upper hose connectors on the Blower House (top four connectors)



3. Switch on all four blower switches, THE LIFT WILL NOW BEGIN TO RAISE
4. **Once bubbles appear under all four float compartments, switch off all blowers, it is critical that all four compartments bubble to ensure the syphon is locked.**
5. Ensure the minimum waterline stripe is above the water and the float remains stationary in a horizontal position.
6. Attach mooring line

3. DO'S and DON'TS

Do

DO ensure that your electrical supply conforms to regulations at the Marina. Please ensure that safety is your priority, you are working with electrical equipment and as such must be cautious.

DO always use guide ropes, they are required for proper positioning of the boat and if not used in the operation of the Boatlift, High & Dry Boatlift (Pty) Ltd accepts no responsibility for any damage or injury caused whatsoever.

Do always raise the float if not used for a period of time or in severe weather or surge conditions.

Do secure the boat to the dock in case the lift is lowered in your absence.

Don't

DON'T allow anyone to board the boat during the lifting or launching operation.

DON'T leave the blowers running when launching the boat.

DON'T attempt to raise any other boat, accept the one it was adjusted for. (Your dealer can adjust the float for any other boat).

4. MOORING LOCATIONS

CAUTION

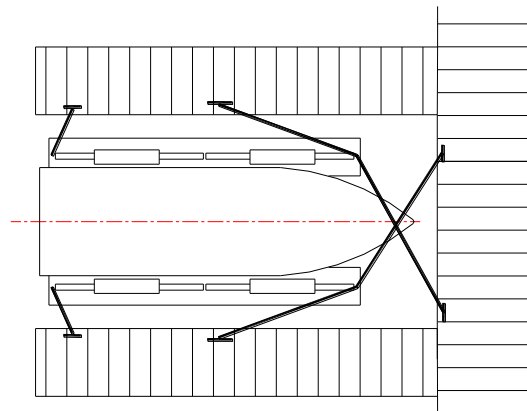
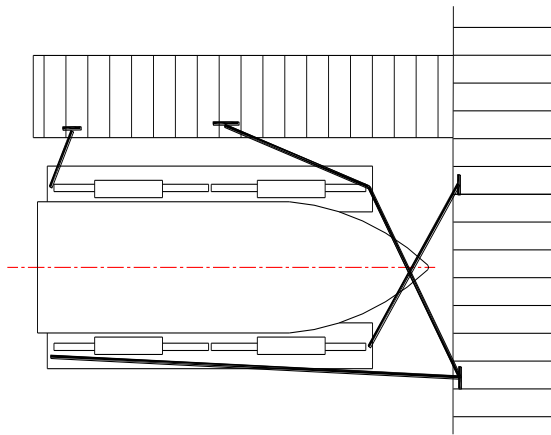
High winds and rough water conditions.

The boat float is not designed to withstand severe water or wind conditions. Should the potential of severe conditions exist it is recommended that the mooring lines be secured from dock structure to bow and stern cleats of the craft to avoid damage to the Boatlift mooring apparatus.

CAUTION

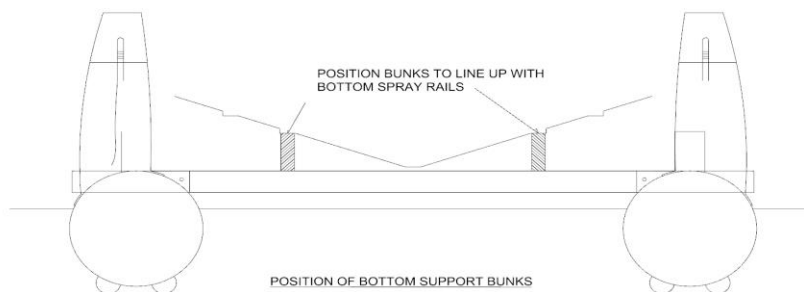
If the lift is left in the fully submerged position damage to the lift and dock may occur during severe weather conditions or high surges. Raise the lift to ride out severe weather conditions and surges.

Suggested mooring layout diagrams



Cross tie front two mooring lines

4.2 BOAT POSITIONING ON LIFT



5. MAINTENANCE

There are no moving parts on the boatlift, so maintenance is minimal.

It is recommended to brush off any marine growth with a nylon brush once a year by raising the float without the boat.

In areas with prolific marine growth the “Blow hole” needs to be cleared of marine growth as required from time to time. Use a nylon brush to remove any marine organisms. The Blow hole is the air and water inlet/outlet situated on the bottom of each pontoon chamber underneath the pontoons and aligned with the middle of the white floatation boxes.

6. TECHNICAL SPECIFICATION

Lift Capacity (kg)	Total Float Length	Required Operational Draft
2000 kg	6 m	0,9 m
3000 kg	7 m	1,6m
4000 kg	8 m	1,6 m
5000 kg	9 m	1,6m
6000 kg	10m	1,6 m
7000 kg	10m	2,0 m
8000 kg	11m	2,0 m
10000 kg	12m	2,0 m

**Beam adjusted to suit boat model.

Add 450mm each side of the boat beam for max boatlift beam.

7. PRODUCT INSTALLATION AND USE WARNING DISCLAIMER

Assembly, installation and repairs to a boatlift should only be carried out by an authorized boatlift technician. If performed by any other person, other than a trained and approved High & Dry Boatlift Technician, all warranty's are void and High & Dry Boatlift (Pty) Ltd take no responsibility for any damage caused whatsoever.

The contents of this manual are subject to change without notice and should not be construed as a commitment, presentation, warranty or guarantee of any method, product or device by High & Dry Boatlift (Pty) Ltd.

Whilst High & Dry Boatlift (Pty) Ltd has made every effort to ensure the accuracy and completeness of the information and material contained herein, neither it nor its data providers give any warranty or guarantee concerning the accuracy or completeness of the information hereby provided, and disclaims any liability arising from the use of this document.

High & Dry Boatlift (Pty) Ltd reserves the right to replace any failed components of the boat lift device at their sole discretion.

High and Dry warranty does not include damages to yourself, boat or equipment under any circumstances.

The obligations and liabilities of High & Dry Boatlift (Pty) Ltd are limited to those of the High & Dry Boat lift device only.

The warranty is not transferrable and applies solely to the first purchaser of the High & Dry Boatlift.

8. WARRENTY CERTIFICATE

The Boatlift provides the following warranty for its boat storage device.

- Workmanship and construction – 12 months
- Hoses, ropes and fasteners – 12 months
- Air blowers (original supply) – 12 months
- GRP Pontoons – 24 months

Warranty is void if:

- The Boatlift is used for any other purpose than private boat Storage.
- Total all up weight of the supported vessel including live load exceeds that of the specification of the Boatlift.
- Modifications have been made to the device or any parts thereof.
- The device is allowed to 'Bottom out' on the sea floor.
- The device is used in a 'rough water' site.
- Willful damage or vandalism.
- The device is left in the water to freeze.

WARRANTY CERTIFICATE

This warranty certificate is issued to _____

Mooring address _____

This is to certify that the Boatlift designated _____ (serial no)

is warranted by High & Dry Boatlifts under the terms and conditions stipulated in this manual

Serial Number _____

Vessel Details _____ (Brand, Model, Size)

Installed by _____ (service agent)

Date Installed _____

Please present this certificate to your dealer when presenting a claim.